

VOLTAS • beko

A TATA Product

VOLTAS • beko

Partner of everyday happiness.

To buy online, please visit us at www.voltaslounge.com

Voltas Beko's 24/7 Customer Care No.:

9818994444/1860 599 4444

WhatsApp: 9818994444

For product registrations: SMS <VB> to 56677

Visit us at: voltasbeko.com

E-mail ID: wecare@voltasbeko.com

Follow us at

@Voltasbeko

voltasbeko

Voltas Beko

#12 Year Compressor Warranty: Voltas Beko Refrigerator is covered for a comprehensive warranty of 2 Year from date of purchase an additional 10 Year warranty on Prosmart Inverter Compressor (2 Year Standard warranty + 10 Year extended warranty on Compressor only) irrespective of whether product is in use or not. Warranty covers repair or replacement of functional spare parts if needed as a result of faulty material, defective components or manufacturing defect to make the unit functional and does not entitle replacement or refund of entire unit, or refund of money. However, any civil, plumbing or electrical addition / alteration to install, Gas charging & labour, shift the product will be within the scope of the customer. * Features are available in select models only. *T&C Apply.

#12 Year Motor Warranty: Washing Machine: Voltas Beko Products (Front Load Washing Machine, Top Load Washing Machine) are covered for a comprehensive warranty of 3 Year from date of purchase an additional 9 Year warranty on Motor (3 Year Standard warranty + 9 Year extended warranty on Motor only) irrespective of whether product is in use or not. Warranty covers repair or replacement of functional spare parts if needed as a result of faulty material, defective components or manufacturing defect to make the unit functional and does not entitle replacement or refund of entire unit, or refund of money. However, any civil, plumbing or electrical addition / alteration to install, labour, shift the product will be within the scope of the customer. * Features are available in select models only. *T&C Apply.

#12 Year Motor Warranty: Dishwasher: Voltas Beko Products (Dish Washer - Model No: DF 15SP & DF 14S) are covered for a comprehensive warranty of 2 Year from date of purchase an additional 10 Year warranty on Motor (2 Year Standard warranty + 10 Year extended warranty on Motor only) irrespective of whether product is in use or not. Warranty covers repair or replacement of functional spare parts if needed as a result of faulty material, defective components or manufacturing defect to make the unit functional and does not entitle replacement or refund of entire unit, or refund of money. However, any civil, plumbing or electrical addition / alteration to install, labour, shift the product will be within the scope of the customer. Model No: DT 8S is covered for a comprehensive warranty of 2 Year from date of purchase an additional 5 Year warranty on Motor (2 Year Standard warranty + 5 Year extended warranty on Motor only) irrespective of whether product is in use or not. * Features are available in select models only. *T&C Apply.

#1 Year Warranty: Microwave: Voltas Beko Product (Microwave - Solo, Grill & Convection) are covered for a comprehensive warranty of 1 Year from date of purchase of the product, irrespective of whether product is in use or not. Warranty covers repair or replacement of functional spare parts if needed as a result of faulty material, defective components or manufacturing defect to make the unit functional and does not entitle replacement or refund of entire unit, or refund of money. However, any civil, plumbing or electrical addition / alteration to install, labour, shift the product will be within the scope of the customer. * Features are available in select models only. *T&C Apply. ¹According to Ecodesign Regulation WM and COMMISSION DIRECTIVE 95/12/EC. ²Tested model is WFL8014VTSC and for other models results may vary. ³Tested model is WFL8014VTSC and for other models results may vary - According to BEE Schedule 12 Washing Machines.

Voltbek Home Appliances Private Limited adheres to the E-Waste (Management & Handling) Rules 2011 notified by the Ministry of Environment and Forests,

Government of India. This product has been manufactured with high quality parts and materials which can be reused and are suitable for recycling.

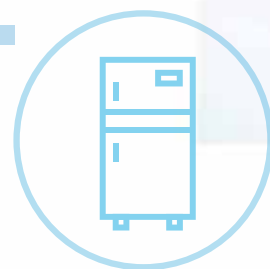
Do not dispose of the waste product with normal domestic and other wastes at the end of its service life. For more information on Voltas E-Waste and

exchange policy, please contact Voltas Toll-Free No: 1860-599-4444.

PARTNER OF EVERYDAY **HAPPINESS**



Range Catalogue 2022



MADE IN INDIA, FOR INDIAN HOMES.

Voltas, a part of the Tata Group was founded in 1954 and is India's most trusted and largest air conditioning brand. Beko, on the other hand, is an international home appliances brand of the Arcelik Group owned by Koc Holding - a Fortune Global 500 company in Europe. Together, we have formed Voltas Beko.

The company is taking the government's 'Make in India' initiative forward by manufacturing Direct Cool Refrigerators in the country, at our factory in Sanand, Gujarat. In addition, Voltas Beko appliances include features that are customised for Indian homes and are guaranteed to simplify the daily life of Indian consumers.

Partner of *everyday* happiness.



WASHING MACHINES



FRONT LOAD WASHING MACHINES



SteamWash™

**Less creasing.
Better cleaning.**

Voltas Beko washing machines use steam to ensure that your laundry is smooth and spotless.

- SteamWash™ technology ensures better cleaning and washing by releasing steam from the bottom of the drum at the beginning and the end of the washing program. The steam softens up the dirt, making it easier to remove, and also makes your clothes softer while reducing creasing.



BENEFITS

Removes dirt easily.
Minimises creasing on clothes.

Leave tough stains to an expert.

Voltas Beko's StainExpert™ gets rid of tough stains like masala, turmeric, curry, collar stain, oil, etc. A combination of rinse cycles, special soaking phases, different water temperatures, and increased tumbling action makes sure your clothes remain free from spots and stains.

BENEFITS

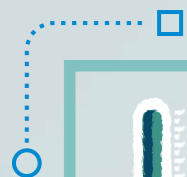
Special treatment to remove tough stains effortlessly.
Fights dirt without damaging your clothes.



StainExpert™

The StainExpert™ program tackles 26 different types of tough daily stains with three different soil level options.





Hygiene+

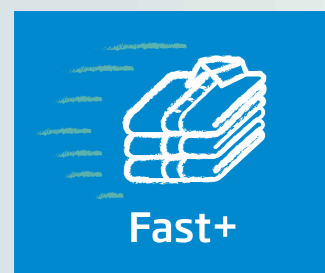
The perfect laundry for your sensitive skin and your baby.

Along with removing any risk of allergies, the Hygiene+ program makes your laundry as clean as ever.

BENEFITS

At 60°C, the super rinsing cycle provides anti-allergic results by removing pet allergens, mites and pollens. At 20°C, the program helps remove bacteria and fungi.

The program allows you to select temperatures between 20°C and 90°C. At 60°C, it provides anti-allergic laundry for your sensitive skin. Even while washing your clothes at a temperature as low as 20°C, the program washes your cotton clothes effectively while removing micro-organisms from them.



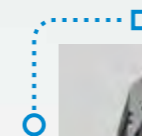
Get your laundry done in a jiffy.

Now when you're doing your laundry, don't worry about running out of time.

Thanks to the additional Fast+ function, it is possible to make a washing cycle 55% faster than conventional washing programs.

BENEFITS

Gives you up to 55% faster washing. Optimum washing results.



ProSmart™ Inverter Motor

Energy Efficient Washing

The ProSmart™ Inverter Motor enhances your machine's performance while consuming less energy.

BENEFITS

The consumption of water and electricity is extremely low.

Along with superior energy efficiency, Voltas Beko's ProSmart™ Inverter Motor provides low mechanical friction, lowers noise levels, and improves durability.



AutoDose

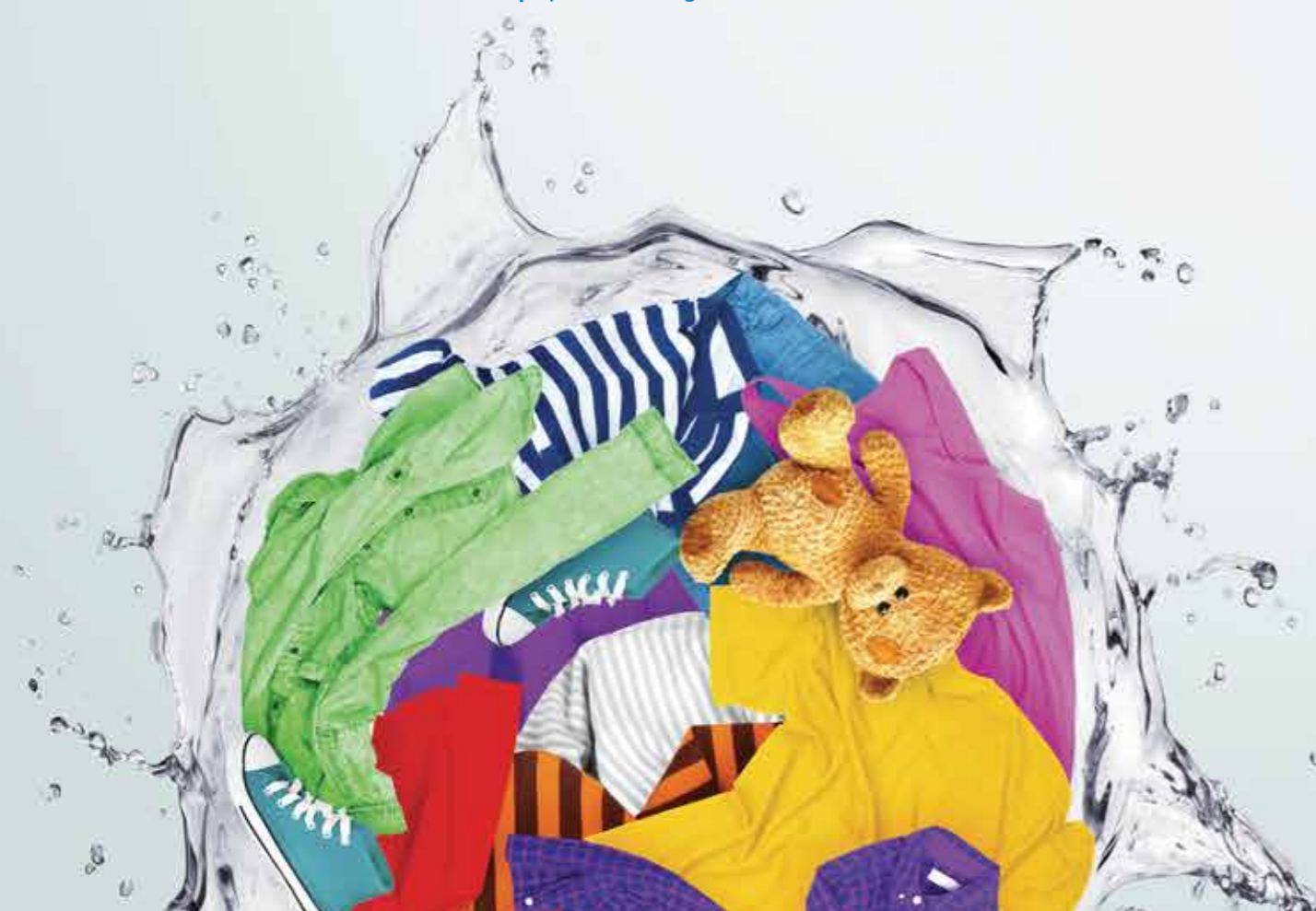
Get perfect rinsing and cleaning results.

AutoDose adds the optimum amount of detergent and softener to your washing.

With the new AutoDose program in Voltas Beko washing machines, you won't waste a drop guessing how much detergent and softener to use for each wash. All you need to do is fill the detergent and softener tanks once. The machine detects the weight of your load and automatically chooses the right amount of detergent, softener and water to use. So, you get perfect cleaning and rinsing results, without any waste. Every single time. This feature helps you save detergent, water and energy. Of course, you also have the option to deactivate the feature and manually choose how much detergent and softener you want to add, when you do your laundry.

BENEFITS

Runs up to 23 cycles without refills. Saves energy, water and detergent.





Daily Express

BENEFITS

Wash a full capacity of laundry in just 28 minutes at 30°C. Wash 2kg of lightly soiled garments in just 14 minutes.

Clean your clothes in a few minutes.

Doing laundry can take up a major chunk of your day. Voltas Beko washing machines come with two short washing programs, i.e. Daily Express and Xpress Super Short.

The Daily Express program washes a full load of laundry in just 28 minutes at 30°C. The Xpress Super Short program helps to wash 2 kg of lightly soiled garments in just 14 minutes.

Noiseless washing



Silent Tech™

Voltas Beko machines come with a special noise blocking technology.

The special shock absorbers enhance noise insulation in the cabinet. Along with that, the specially developed S-shaped side wall design and the electronic unbalanced load algorithm help ensure that your laundry gets done in silence.

BENEFITS

Total silence while cleaning to give you uninterrupted comfort. 45dB(A) washing sound level.

Effective washing, yet gentle on your fabrics.

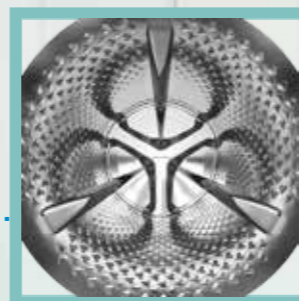
Voltas Beko's GentleWave™ system provides effective washing that is gentle on all kinds of fabrics. Combined with the GentleWave™ drum and a special paddle design, the unique inner contours of Voltas Beko washing machines generate powerful waves that are effective at dirt removal, yet are harmless for clothes.



Gentle Wave™

BENEFITS

The GentleWave™ system is a combination of GentleWave™ drum, Inner Door Glass Curve, and paddle design.



Drumclean Program



A washing machine that washes itself too.

Thanks to this special program, the drum in the washing machine receives the necessary cleaning automatically.

The program only starts when the drum is empty. It ensures that there is no accumulation of residue in it after the clothes are washed. This is achieved when the optimal amount of hot water is used at 70°C with a much higher tumbling speed as compared to standard programs.

BENEFITS

Provides better hygiene by heating water up to 70°C. Avoids bad odour inside the machine/detergent drawer/blower.



Touch Control

Washing machines, simplified.

Operate your washing machine at the touch of a button.

The Touch Control feature includes a panel that has buttons for power, pre-wash, eco-mode, temperature setting, and more. This makes it extremely simple for you to access various functions of the machine, with just one touch.

BENEFITS

Makes it extremely easy to operate the machine.



HomeWhiz™

Your smartphone is your remote.

The HomeWhiz™ application connects your smartphone to your washing machine, so you can control it from anywhere inside the house. The application also includes a feature called Infinity Program, which lets you download a wide range of washing programs that are best suited for your clothes.

BENEFITS

Enables connectivity with other smart appliances for added convenience. Offers a choice of washing programs.

The smart way of drying your laundry.



DRYER

Voltas Beko's washing machines come equipped with **smart moisture and temperature sensors**.

Optisense® Technology

Optisense® Technology helps you choose the preferred level of dryness. The dryer stops automatically when the desired level is achieved. The moisture sensors make sure that your laundry is evenly dried. Along with that, an extra smart sensor looks after your machine by detecting voltage surges, protecting it by cutting off the power and helping it last longer.

Heat Pump Technology

Heat Pump Technology **saves energy** by drying your clothes without the need for a heater. In fact, it **uses 60% less energy** as compared to condenser machines, and even ensures that the colours of your **clothes don't bleed or fade**. Its Gentle Drying feature lowers the temperature up to 20%, drying your clothes gently yet efficiently. And, its Closed Cycle feature ensures efficient drying at high temperature.

Wash and dry quickly to suit your daily needs.



WASHER DRYER

Voltas Beko washing machines come equipped with the Super Express Wash & Wear™ program.

WASH & WEAR™

This feature allows you to get 1 kg of laundry washed and dried in less than an hour. 2 shirts (0.5 kg) will be **dried completely in 40 minutes** when you set the temperature to 20°C. 5 shirts (1 kg) will be dried completely in 60 minutes when you set the temperature to 30°C.



WFL6010VTMS

Capacity: 6 kg
5-Star Rating
StainExpert™
Hygiene+
SteamWash™
GentleWave™
HomeWhiz™
SlientTech™
ProSmart™ Inverter Motor



WFL6010VPWW

Capacity: 6 kg
5-Star Rating
Stain60°
SlientTech™
ProSmart™
Inverter Motor



WFL6010VPSS/60S*

Capacity: 6 kg
5-Star Rating
StainExpert™
Hygiene+
SlientTech™
ProSmart™ Inverter Motor

*5-Star Rating is NA in the WFL60S model



WFL6512VTSS

Capacity: 6.5 kg
5-Star Rating
StainExpert™
Hygiene+
SteamWash™
HomeWhiz™
SlientTech™
ProSmart™ Inverter Motor

FRONT LOAD **WASHING MACHINES**



WFL6512VTMP

Capacity: 6.5 kg
5-Star Rating
StainExpert™
Hygiene+
SteamWash™
HomeWhiz™
SlientTech™
ProSmart™ Inverter Motor



WFL6510VPWS/65W*

Capacity: 6.5 kg
5-Star Rating
StainExpert™
Hygiene+
SlientTech™
ProSmart™ Inverter Motor

*5-Star Rating is NA in the WFL65W model



WFL7010VTSS

Capacity: 7 kg
5-Star Rating
StainExpert™
Hygiene+
SteamWash™
HomeWhiz™
SlientTech™
ProSmart™ Inverter Motor

FRONT LOAD **WASHING MACHINES**



WFL8014VTSC

Capacity: 8 kg
5-Star Rating
StainExpert™
Hygiene+
SteamWash™
GentleWave™
HomeWhiz™
SlientTech™
ProSmart™ Inverter Motor



WFL8014VTAP/80AD*

Capacity: 8 kg
5-Star Rating
StainExpert™
Hygiene+
GentleWave™
Auto Dose
SlientTech™
ProSmart™ Inverter Motor

*5-Star Rating is NA in the WFL80AD model



WFL7012VTMP

Capacity: 7 kg
5-Star Rating
StainExpert™
Hygiene+
SteamWash™
HomeWhiz™
SlientTech™
ProSmart™ Inverter Motor



WFL7012VTAC

Capacity: 7 kg
5-Star Rating
StainExpert™
Hygiene+
SteamWash™
HomeWhiz™
SlientTech™
ProSmart™ Inverter Motor



WFL8012VTWA

Capacity: 8 kg
5-Star Rating
StainExpert™
Hygiene+
SteamWash™
GentleWave™
HomeWhiz™
SlientTech™
ProSmart™ Inverter Motor

DRYER | WASHER AND DRYER



WDR80S (Dryer)

Capacity: 8 kg
Heat Pump Technology
ProSmart™ Inverter Motor
GentleWave™
16 programs
Drum Light
SlientTech™
Child lock



WWD80S (Washer and Dryer)

Capacity: Wash 8 kg / Dry 5 kg
ProSmart™ Inverter Motor
GentleWave™
SlientTech™
16 programs
Baby Protect + Wash & Dry

WARRANTY

12-Year Motor Warranty | 3-Year Comprehensive Warranty

WARRANTY

12-Year Motor Warranty | 3-Year Comprehensive Warranty