

VOLTAS • beko

A TATA Product

VOLTAS • beko

Partner of everyday happiness.

To buy online, please visit us at www.voltaslounge.com

Voltas Beko's 24/7 Customer Care No.:

9818994444/1860 599 4444

WhatsApp: 9818994444

For product registrations: SMS <VB> to 56677

Visit us at: voltasbeko.com

E-mail ID: wecare@voltasbeko.com

Follow us at

@Voltasbeko

voltasbeko

Voltas Beko

#12 Year Compressor Warranty: Voltas Beko Refrigerator is covered for a comprehensive warranty of 2 Year from date of purchase an additional 10 Year warranty on Prosmart Inverter Compressor (2 Year Standard warranty + 10 Year extended warranty on Compressor only) irrespective of whether product is in use or not. Warranty covers repair or replacement of functional spare parts if needed as a result of faulty material, defective components or manufacturing defect to make the unit functional and does not entitle replacement or refund of entire unit, or refund of money. However, any civil, plumbing or electrical addition / alteration to install, Gas charging & labour, shift the product will be within the scope of the customer. * Features are available in select models only. *T&C Apply.

#12 Year Motor Warranty: Washing Machine: Voltas Beko Products (Front Load Washing Machine, Top Load Washing Machine) are covered for a comprehensive warranty of 3 Year from date of purchase an additional 9 Year warranty on Motor (3 Year Standard warranty + 9 Year extended warranty on Motor only) irrespective of whether product is in use or not. Warranty covers repair or replacement of functional spare parts if needed as a result of faulty material, defective components or manufacturing defect to make the unit functional and does not entitle replacement or refund of entire unit, or refund of money. However, any civil, plumbing or electrical addition / alteration to install, labour, shift the product will be within the scope of the customer. * Features are available in select models only. *T&C Apply.

#12 Year Motor Warranty: Dishwasher: Voltas Beko Products (Dish Washer - Model No: DF 15SP & DF 14S) are covered for a comprehensive warranty of 2 Year from date of purchase an additional 10 Year warranty on Motor (2 Year Standard warranty + 10 Year extended warranty on Motor only) irrespective of whether product is in use or not. Warranty covers repair or replacement of functional spare parts if needed as a result of faulty material, defective components or manufacturing defect to make the unit functional and does not entitle replacement or refund of entire unit, or refund of money. However, any civil, plumbing or electrical addition / alteration to install, labour, shift the product will be within the scope of the customer. Model No: DT 8S is covered for a comprehensive warranty of 2 Year from date of purchase an additional 5 Year warranty on Motor (2 Year Standard warranty + 5 Year extended warranty on Motor only) irrespective of whether product is in use or not. * Features are available in select models only. *T&C Apply.

#1 Year Warranty: Microwave: Voltas Beko Product (Microwave - Solo, Grill & Convection) are covered for a comprehensive warranty of 1 Year from date of purchase of the product, irrespective of whether product is in use or not. Warranty covers repair or replacement of functional spare parts if needed as a result of faulty material, defective components or manufacturing defect to make the unit functional and does not entitle replacement or refund of entire unit, or refund of money. However, any civil, plumbing or electrical addition / alteration to install, labour, shift the product will be within the scope of the customer. * Features are available in select models only. *T&C Apply. ¹According to Ecodesign Regulation WM and COMMISSION DIRECTIVE 95/12/EC. ²Tested model is WFL8014VTSC and for other models results may vary. ³Tested model is WFL8014VTSC and for other models results may vary - According to BEE Schedule 12 Washing Machines.

Voltbek Home Appliances Private Limited adheres to the E-Waste (Management & Handling) Rules 2011 notified by the Ministry of Environment and Forests,

Government of India. This product has been manufactured with high quality parts and materials which can be reused and are suitable for recycling.

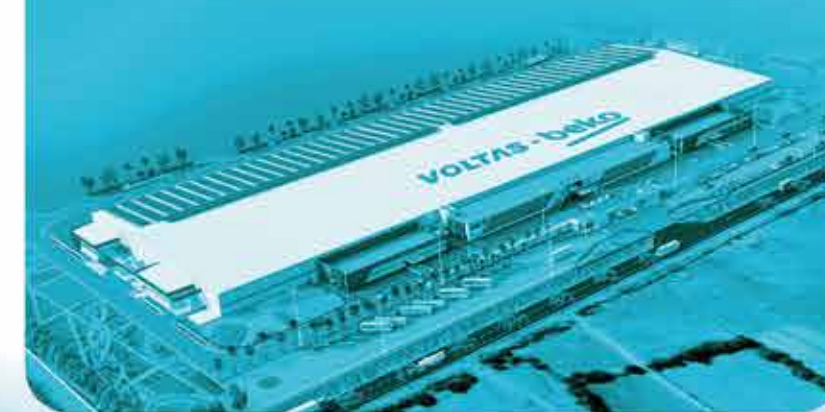
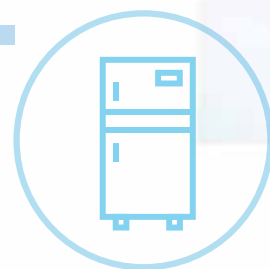
Do not dispose of the waste product with normal domestic and other wastes at the end of its service life. For more information on Voltas E-Waste and

exchange policy, please contact Voltas Toll-Free No: 1860-599-4444.

PARTNER OF EVERYDAY **HAPPINESS**



Range Catalogue 2022



MADE IN INDIA, FOR INDIAN HOMES.

Voltas, a part of the Tata Group was founded in 1954 and is India's most trusted and largest air conditioning brand. Beko, on the other hand, is an international home appliances brand of the Arcelik Group owned by Koc Holding - a Fortune Global 500 company in Europe. Together, we have formed Voltas Beko.

The company is taking the government's 'Make in India' initiative forward by manufacturing Direct Cool Refrigerators in the country, at our factory in Sanand, Gujarat. In addition, Voltas Beko appliances include features that are customised for Indian homes and are guaranteed to simplify the daily life of Indian consumers.

Partner of *everyday* happiness.



DISHWASHER



AquaFlex™

AquaFlex™ your dishwasher's muscles

Wash all kinds of tableware in the dishwasher with AquaFlex™ technology.

Whether it's porcelain or plastic, AquaFlex™ enables the adjusting of water pressures to the lower and upper baskets gently, providing A-class washing and drying results for all kinds of dishes.

BENEFITS

Provides efficient and gentle washing for all kinds of dishes.



CornerIntense™

Every single dish, cleaned to perfection with CornerIntense™

CornerIntense™ ensures that dishes in every corner are rinsed out effortlessly.

BENEFITS

Ensures thorough cleaning of every corner, no matter where your dishes are located.

The advanced CornerIntense™ feature ensures that even the dishes and glasses kept in the corners come out looking spotless. In comparison to conventional dishwashers, the spray-arm in this dishwasher is more elongated and designed to move in a unique way. This helps the water and detergent reach the corners of the baskets easily.



HomeWhiz™



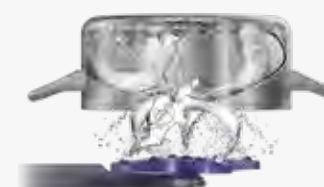
Control your dishwasher from anywhere at home with HomeWhiz™

The HomeWhiz™ app lets you select the washing cycle of your choice right from your phone.

BENEFITS

Enables connectivity with other smart appliances for added convenience.

The HomeWhiz™ app connects your smartphone to the dishwasher with the help of a Wi-Fi connection, so you can monitor and control functions from anywhere in the house. The application also includes an exclusive feature called Infinity Program, which gives you access to a wide range of washing programs that are best suited for your utensils.



AqualIntense™

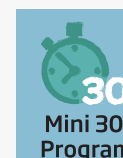
Dishwashing now gets AqualIntense™

The Voltas Beko AqualIntense™ technology creates a power zone in the lower basket by providing intense water pressure.

This specially designed 360° rotating head helps water reach the nooks and corners of dishes and cleans even heavily soiled pots and pans. It provides a dedicated function and stronger washing power by applying higher water pressure in the lower basket power zone.

BENEFITS

Gives 5 times better cleaning while saving time as well.



Mini 30' Program

Save time and energy with the Mini 30' Program

Perfect for lightly soiled dishes and glasses, the Mini 30' Program washes a full load in 30 minutes at 35°C, thus saving time and energy.

Saves time and energy.



ProSmart™ Inverter Motor

Save power with ProSmart™ Inverter Motor

The ProSmart™ Inverter reduces friction in the motor.

Helps lower noise and energy consumption. Due to its magnetic design, the motor has a low frequency, and fewer vibrations. The absence of bearings in the design also helps reduce mechanical noise.

BENEFITS

The consumption of water and electricity is extremely low.

Along with superior energy efficiency, Voltas Beko's ProSmart™ Inverter Motor provides low mechanical friction, lowers noise levels, and improves durability.



Fast+

Get it done in a jiffy with Fast+

The ProSmart™ Inverter Motor increases the washing temperature, and adjusts the water pressure. This function also speeds up washing cycles up to 3 times.

BENEFITS

Up to 70% faster cleaning performance than an average dishwasher.

The ProSmart™ Inverter Motor enables efficient energy consumption and reduces friction in the motor. Mechanical noises are lower due to the absence of bearings in the design. Along with that, the motor produces less vibrations due to its magnetic design.



Ultimate
Glass Care

Give your dishes the Ultimate Glass Care

Ultimate Glass Care consists primarily of two features: GlassShield™ Technology and SteamGloss™ Technology

GlassShield™ Technology

Water hardness inside the dishwashers can be regulated manually by optimising the mixture of water from the tap and water from the softening unit. With this technology, better protection against glass corrosion is obtained as compared to standard dishwashers.

SteamGloss™ Technology

With an extended heat application of 10 minutes inside the dishwasher, the size of the water droplets is reduced and glossiness is improved.



BENEFITS

GlassShield™ Technology- Protects glasses from cloudiness and irradiance.
SteamGloss™ Technology- Enables you to dry your glasses without losing their brightness making them shine 23% more.



DISHWASHERS



DF15A

Place settings: 15
CornerIntense™
HomeWhiz™+ Wi-Fi
AquaFlex™
Fast+
Quick and Shine™
ProSmart™ Inverter Motor
9 Programs
Dirt Sensor
3 Spray Levels



DF14S2

Place settings: 14
AquaIntense™
AquaFlex™
Fast+
Quick and Shine™
ProSmart™ Inverter Motor
8 Programs
Dirt Sensor
3 Spray Levels





DF14W

Place settings: 14
Quick and Shine™
5 Programs
2 Spray Levels



DF14S3

Place settings: 14
Quick and Shine™
5 Programs
2 Spray Levels



DT8B

The table-top models are easy to install and accommodate, even in cramped in kitchen spaces.

Place Settings: 8
6 Programs
2 Spray Levels



DT8S

The table-top models are easy to install and accommodate, even in cramped in kitchen spaces.

Place Settings: 8
6 Programs
2 Spray Levels

